

CREATING SMILES FOR LIFE



**SWIFT**



**2020 CHALLENGER**

# INSPIRING GENERATIONS



Outstanding value, great looks and high-level specification with a choice of six models... the Challenger range has it all. Helping you to enjoy your leisure lifestyle to the fullest, the range's sophisticated interior is designed for stylish, comfortable family usage, from the warm fabrics to the fully equipped kitchen and washroom.

With security a paramount consideration for many, it is reassuring that Challenger is pre-installed with Swift Command Tracker, a Thatcham Category S7 approved pro-active tracker with subscription option for extra security and insurance discounts\*.

Images shown with optional features.

\*Dependent on insurer

# 2020 CHALLENGER

At Swift we want your leisure vehicle to be your sanctuary, where you can relax, unwind and let the 9-5 melt away. That's why everything we produce is designed for the utmost luxury, practicality and performance, using our innovative approach to help you create smiles for life. Step inside and take the tour...

## CONTENTS

04 REASONS TO BUY

06 SWIFT CHALLENGER

14 RANGE QUICK VIEW

15 HIGHLIGHTS

16 SPECIFICATION

18 FEATURES

20 FABRIC OPTIONS

21 VALUE ADDED PARTNERS



# REASONS TO BUY A SWIFT CARAVAN

Find out what sets Swift apart

4



Images shown with optional features.

## RELIABLE BUILD QUALITY

SMART, the UK's leading modern construction system\*: extensively researched and tested. Improving moisture resilience, aerodynamics, strength and aesthetics, with a 10-year manufacturer bodyshell warranty.



\*Subject to Ts&Cs



## PROTECTING GOOD LOOKS

More durable and better at withstanding impact, a GRP outer shell and hail resistant roof protects Swift caravans to maintain their fantastic looks. Inside, extreme pound-tested cushioning, bleachable carpets and robust fabrics, including optional SwiftShield, keep your home from home looking its best.



## PIONEERS

Innovation is our passion. We continually push the boundaries and utilise state of the art design and construction techniques to ensure our products look sensational, work intuitively and function efficiently, like Swift Command for monitoring and controlling onboard systems via a user-friendly panel and smartphone app. It's vehicle management at your fingertips.



SWIFT  
COMMAND  
DEVELOPED WITH SARCOSENT



## SECURE & SAVE

For greater security, Swift Command Tracker, the Thatcham Category S7 approved pro-active tracker\* with 24/7 EU cover, pre-installed on every caravan. There's also Supersure Insurance, Defaqto 5-star rated with half-price insurance for owners of a Swift caravan up to 3 years old.\*\* All Swift caravans come with many energy efficient features like LED lighting.



\*Subject to annual subscription \*\*For first year only

## EXTENSIVE CHOICE

With over forty models across four caravan ranges, there is a huge choice to suit most budgets and tastes at weights suitable for a variety of tow cars - all supported by the UK's largest dealer network. Many ranges have a selection of value-added extras to help you customise your caravan.

Whatever specification you decide, Swift owners enjoy exceptional value for money.



## EUROPE'S NO.1 BRAND

Yorkshire bred with a deep-rooted customer-first philosophy for your best Swift experience. Skilled technicians are 'Swift Academy' trained to craft and care for your caravan, with expert advice close at hand via Connect Direct, an online account for new owners offering support and guidance; report a problem, and we'll work with your dealer to resolve it.

Moreover, we partner with leading suppliers such as Duvalay™ to deliver class-leading specification.



# SWIFT CHALLENGER

Stay cosy whatever the weather with high-performing Alde radiator central and water heating now fitted as standard, maintaining a comfortable climate with quiet, reliable operation.

## FEEL COMPLETELY AT HOME

The warm, natural tones and purple hues of Challenger's 'Glacier' soft furnishings scheme complement the 'Aralie Sen' woodgrain and gloss high-level lockers, creating a welcoming 'home from home' feel, while Swift AirWave cushioning further enhances seating and sleeping comfort.

## FAMILY-FRIENDLY SPACE

With 1.95m internal headroom and a panoramic sunroof, Challenger offers a light environment to brighten everyone's day. Designed for families, it can be kept tidy thanks to extensive storage, from overhead and front corner lockers to a wide front chest with concealed drawer.



Images shown with optional features.





Images shown with optional features.





Fridge is model specific

#### EVERYTHING AT HAND IN THE KITCHEN

Enjoy preparing family meals together with Challenger's fully equipped kitchen, including a Thetford thermostatic oven with dual fuel hob and separate grill, ventilated microwave and spacious Dometic fridge.

#### A GREAT NIGHT'S SLEEP

Exclusive lightweight Duvalay Duvalite™ Apollo Luxe mattresses, featuring Freshtec for maximum airflow, are fitted to all fixed beds to ensure the best nights' sleep possible, while beech slat seat and bed bases with sprung hinged tops deliver extra comfort plus easy bed make-up.

#### CONTROL AT YOUR FINGERTIPS

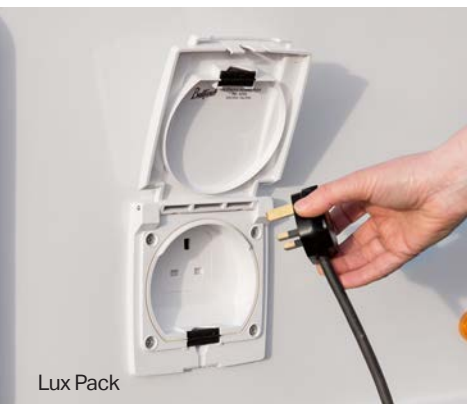
Manage your onboard functions with ease via the exclusive Swift Command control system's large 7" LCD colour touchscreen panel, with easy to use interface.



Images shown with optional features.



Lux Pack



Lux Pack



Lux Pack



#### A RETREAT FOR ALL SEASONS

For year-round comfort, Challenger offers Grade 3 classification for heating and thermal insulation. The class-leading Alde radiator central heating and water heating is now fitted as standard so you can stay cosy whatever the weather.

#### FRESH FOR THE ADVENTURES AHEAD

Challenger presents a fully fitted washroom containing toilet, vanity bowl\* and shower cubicle, with an Ecocamel Orbit shower head including on/off button for greater power while using less water, so you can freshen up ahead of the next adventure.

#### CUSTOMISED TO YOUR NEEDS

The optional special value Lux Pack features a host of desirable additions, including illuminated kitchen splashback, key fob operated alarm and awning light, BBQ point, 230V external mains point and external access service door to the nearside front bed.

\*Model specific

**HALF  
PRICE  
INSURANCE\***



***SUPERSURE*  
INSURANCE**

12

**INSURE YOUR SMILES**

Defacto 5-star rated insurance available on all Swift Caravans up to 3 years old

**[swiftgroup.co.uk/buy/supersure-insurance](https://www.swiftgroup.co.uk/buy/supersure-insurance)**



\*Half-price insurance rate is applied when buying a new or up to 3 years old Swift caravan, and after all available discounts have been taken into account. Ts & Cs apply.

**LOW  
RATE  
FINANCE**



**SWIFT  
ADVANCE**

A TRADING STYLE OF

**blackhorse**



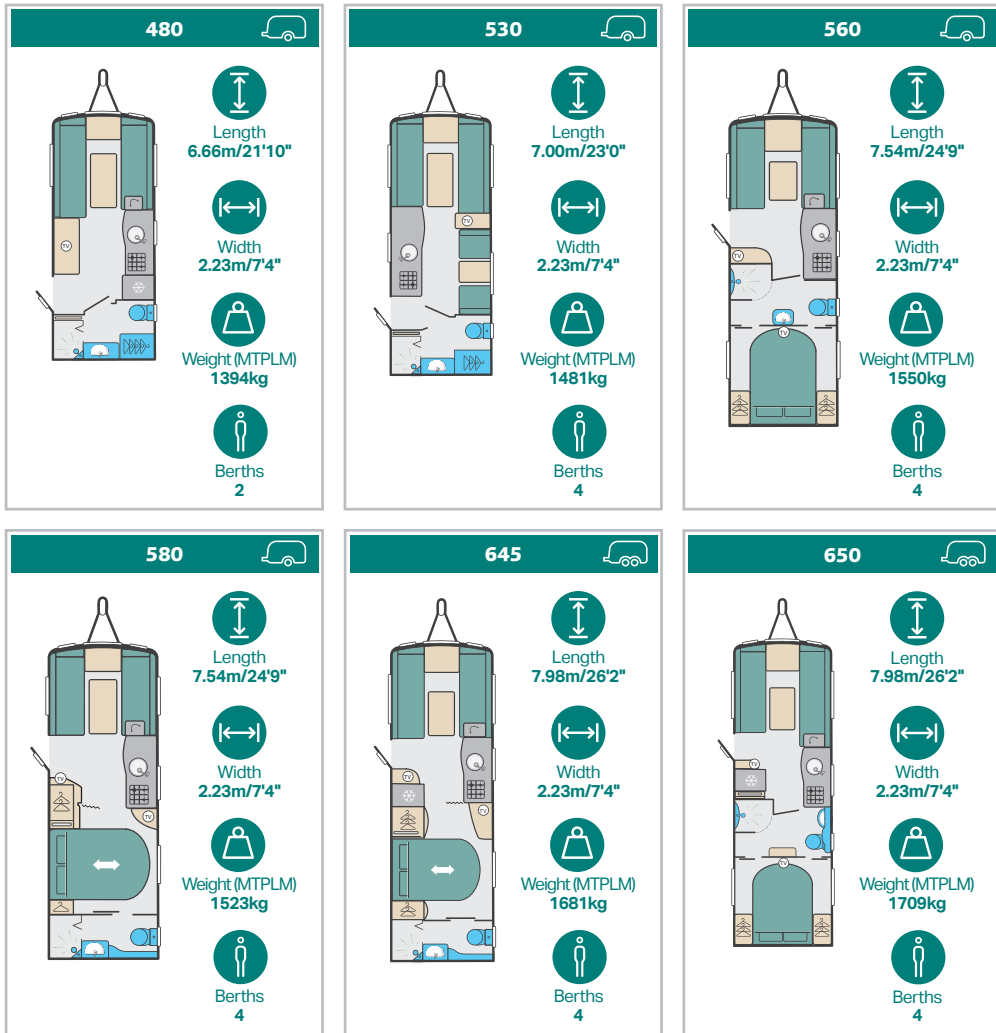
**FINANCE YOUR SMILES**

Funding options to help finance your next Swift Caravan?

**[swiftgroup.co.uk/buy/finance](https://www.swiftgroup.co.uk/buy/finance)**

Credit is subject to status and is only available to UK residents aged 18 or over.  
Credit is provided by Swift Advance a trading style of Black Horse Ltd, St William House,  
Tresillian Terrace, Cardiff CF10 5BH

# CHALLENGER RANGE QUICK VIEW



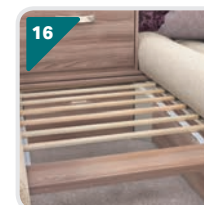
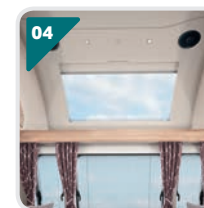
For days full of possibilities, exciting activities and simple pleasures, all amid the landscapes of your choosing, discover Swift's unforgettable touring caravan range.

Escape the 9-5 and find your own path with the amazing freedom offered by a luxurious touring caravan. Instead of the hassle and restriction of booking hotels, let your holidays be guided by your own sense of adventure – those last-minute whims, those can't-bear-to-leave moments. Prepare and share meals together, watch the sun set and switch off from the world, before a great night's sleep where you can dream of all the next day holds. It's your very own home-from-home, where you can enjoy everyday comforts, privacy and amenities wherever the road takes you. From family holidays full of fun, sand castles and exploration, to relaxing getaways for just the two of you, what better way to make lifelong memories and create smiles for life than with a Swift touring caravan.

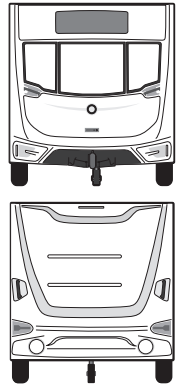


# CHALLENGER HIGHLIGHTS

- 01.** Sweeping front robust GRP panel incorporating triple flush fitting front window design and wide access gas locker door
- 02.** Hail resistant exterior GRP roof with 80W roof mounted solar panel fitted as standard for enhanced independence
- 03.** External robust rear GRP panel with exclusive LED rear light clusters, LED high level marker and brake light which provide better visibility in poor weather
- 04.** 1.95m (6'5") internal headroom and panoramic sunroof design incorporating recessed LED lighting and speakers
- 05.** Wide front chest featuring a soft close drawer with concealed drawer inside, convenient slide-out extending top and front binnacle design incorporating chrome effect sockets surround and USB points
- 06.** 'Glacier' soft furnishing scheme and 'Aralie Sen' woodgrain with contemporary colouring and high gloss upper locker doors with chrome effect inlay and positive locking handles
- 07.** **NEW** ALDE radiator central heating and water heating with daily programming with LCD touchscreen control and choice of 1kW, 2kW or 3kW setting
- 08.** Large 7", easy to use, LCD colour touchscreen Swift Command control panel with improved functionality and app interface, featuring **NEW** fridge control
- 09.** Swift AirWave cushioning for greater seating and sleeping comfort
- 10.** Exclusive Duvalay Duvalite Apollo Luxe mattress containing Freshtec – a market leading high spec foam offering maximum airflow for a cool, comfortable good night's sleep (model specific)
- 11.** Thetford thermostatic oven with electronic ignition, dual fuel hob with glass lid safety cut-out feature, 1x 800W electric hotplate & 3 gas burners with electronic ignition, and separate grill along with ventilated microwave with digital controls for all your cooking requirements
- 12.** Dometic 8 series electronic ignition fridge with removable freezer compartment in 530, 560 & 580 and **NEW** tall slimline dual hinged Dometic 10 series fridge freezer in 480, 645 & 650
- 13.** Positive overhead locker catches for secure storage on the move
- 14.** AL-KO stabiliser and shock absorbers provide a safer, smoother towing experience
- 15.** Front corner opening lockers for extra storage and LED lighting throughout including over-locker lighting and illuminated pelmets above side windows
- 16.** Beech slat seat and bed bases for extra comfort with sprung hinged tops for easy access, and bed make-up system with slats retained on track



# CHALLENGER SPECIFICATION



	480	530	560	580	645	650

Berths	2	4	4	4	4	4
Number of Axles	1	1	1	1	2	2
Internal Length (at bed box height)	4.95m/16'3"	5.29m/17'4"	5.83m/19'2"	5.83m/19'2"	6.27m/20'7"	6.27m/20'7"
Overall Width#	2.23m/7'4"	2.23m/7'4"	2.23m/7'4"	2.23m/7'4"	2.23m/7'4"	2.23m/7'4"
Overall Height (inc. TV Aerial)#	2.61m/8'7"	2.61m/8'7"	2.61m/8'7"	2.61m/8'7"	2.61m/8'7"	2.61m/8'7"
Maximum Internal Headroom	1.95m/6'5"	1.95m/6'5"	1.95m/6'5"	1.95m/6'5"	1.95m/6'5"	1.95m/6'5"
Overall Length#	6.66m/21'10"	7.00m/23'0"	7.54m/24'9"	7.54m/24'9"	7.98m/26'2"	7.98m/26'2"
Awning A/A Dimension	9.32m/30'7"	9.66m/31'8"	10.20m/33'6"	10.20m/33'6"	10.52m/34'6"	10.52m/34'6"
Mass in Running Order (inc. tolerance)	1262kg/24.8cwt	1325kg/26.1cwt	1389kg/27.3cwt	1362kg/26.8cwt	1516kg/29.8cwt	1544kg/30.4cwt
Maximum Technical Permissible Laden Mass	1394kg/ 27.4cwt	1481kg/ 29.2cwt	1550kg/ 30.5cwt	1523kg/ 30.0cwt	1681kg/ 33.1cwt	1709kg/ 33.6cwt
Total User Payload	132kg/2.6cwt	156kg/3.1cwt	161kg/3.2cwt	161kg/3.2cwt	165kg/3.2cwt	165kg/3.2cwt
Personal Effects Payload	127kg/2.5cwt	151kg/3.0cwt	156kg/3.1cwt	156kg/3.1cwt	160kg/3.1cwt	160kg/3.1cwt
Options	5.0kg/0.1cwt	5.0kg/0.1cwt	5.0kg/0.1cwt	5.0kg/0.1cwt	5.0kg/0.1cwt	5.0kg/0.1cwt
Tyre Size	185 R14C 102Q	185 R14C 102Q	185 R14C 102Q	185 R14C 102Q	185/70 R14 88 T	185/70 R14 88 T
Thermal Insulation Grade	THREE	THREE	THREE	THREE	THREE	THREE
<b>BED SIZES</b>						
Front Double	202cm x 186cm/6'8" x 6'1"	202cm x 176cm/6'8" x 5'9"	202cm x 156cm/6'8" x 5'1"	202cm x 156cm/6'8" x 5'1"	202cm x 156cm/6'8" x 5'1"	202cm x 156cm/6'8" x 5'1"
Or Front Nearside Single	196cm x 72cm/6'4" x 2'4"	176cm x 72cm/5'9" x 2'4"	156cm x 72cm/5'1" x 2'4"	156cm x 72cm/5'1" x 2'4"	156cm x 72cm/5'1" x 2'4"	156cm x 72cm/5'1" x 2'4"
And Front Offside Single	186cm x 72cm/6'1" x 2'4"	186cm x 72cm/6'1" x 2'4"	156cm x 72cm/5'1" x 2'4"	156cm x 72cm/5'1" x 2'4"	156cm x 72cm/5'1" x 2'4"	186cm x 72cm / 6'1" x 2'4"
Rear Double			190cm x 133cm/6'3" x 4'4"	185cm x 133cm/6'1" x 4'4"	185cm x 133cm/6'1" x 4'4"	185cm x 133cm/6'1" x 4'4"
Side Single (offside)		180cm x 62cm/5'11" x 2'0"				
Side Single (nearside)						
Side Bunk (offside)		176cm x 59cm/5'9" x 1'11"				

## Notes:

**MASSSES:** The masses are calculated in accordance to EU regulation 1230/2012 and NCC code of practice 304.

The Mass in Running Order (MRO) comprises:

1. The mass of the empty caravan as supplied by Swift including loose items such as the hook-up cable, kit bag, entrance step, manuals etc.
2. 10kg allowance for LPG

The MRO is calculated with the fresh water tank, toilet flush tank and water heater empty. If you travel with water in the fresh water tank, toilet flush tank and the water heater the payload will reduce accordingly.

The personal effects is based on the number of berths and the length of the caravan and includes an allowance of 20kg for a leisure battery.

The Maximum Technical Laden Mass (MTPLM) is the maximum mass allowed when the caravan is fully laden.

**WARNING:** Under no circumstances should the MTPLM be exceeded.

**BED SIZES:** Please note that the front double bed sizes quoted are for seating configurations without chest of drawers. The front double bed width for a layout with a chest of drawers fitted will be reduced by 0.4m (1'4") from that stated.

**AWNING SIZES:** Due to the varying awning designs and sizes the awning sizes given are approximate only. Specific awning sizes must be confirmed by your dealer or the awning manufacturer prior to purchase.

# The dimensions given are approximate due to slight variations in suspension ride heights, loading conditions and tyre pressures.

\* Estimated weight or bed size.

Customers should verify the actual dimensions of their touring caravan before committing to anything that could be impacted by these dimensions.

Please note: Any dealer fit options will reduce the overall payload available to the user of the caravan. If you require additional payload it is possible to upgrade the MTPLM to the upper limit. Please contact your caravan dealer for more information.

**LED ROAD LIGHTS:** Certain vehicles may require a secondary fuse box when towing models fitted with LED road lighting.





Images shown with optional features.

# FEATURES

## ECCLES X ENHANCEMENTS

- Wide overall body at 2.46m/8'1"
- Extra wide carbon effect gas locker door with single lever three point locking
- Wide sweeping front panel in GRP with triple opening windows with wider central window
- Spacious front lounge with extra 7 inches between seats (compared to standard Eccles models)
- Extra wide front chest featuring a soft close drawer with concealed drawer inside and convenient slide-out extending top
- Easy accu ride bed makeup system on front beds with beech slat seat and bed bases with fully opening hinged tops for extra comfort and easy access
- Front seating makes up into larger double bed (7'4 x 4' with chest in situ and 7'4 x 5'3 without chest) (Except 850; L-shaped lounge)
- Front L-shaped lounge double bed 7'4 x 4'2 (850)
- Wider rear fixed double bed in 850
- Wider washroom and one additional wardrobe in 835
- Brand new 850 layout featuring L-shaped lounge and rear island double bed
- Wider freestanding tables (suitable for full size place setting)

## EXTERIOR

- European Whole Vehicle Type Approval ensures compliance with strict weight, dimension and safety regulations
- EN1645 Grade 3 classification for heating and thermal insulation
- Overall body width 2.23m/7'4"
- AL-KO galvanised steel chassis with Euro-axle
- SMART construction with GRP body panels:
  - Strong, moisture proof 'PURE' polyurethane timber-less framed body shell with polystyrene insulation core (25mm in sidewalls, 32mm in roof)
  - Robust balanced panel side walls with GRP outer and inner skin
  - 44mm 'sandwich' floor construction with GRP outer skin, ply upper and high rigidity Styrofoam core
  - Hail resistant exterior GRP roof, fully bonded for extra strength and flatness
  - Sweeping front panel in GRP with triple flush fitting opening windows and exclusive LED front marker lights

- Full height GRP rear panel
- Streamlined aerodynamic profile with panoramic sunroof design
- Stylish exterior graphics scheme
- LED side marker running lights
- Chrome effect two part grab handles to front and rear
- Fully double-glazed opening windows (no single-glazed cold areas)
- Surface mounted impact resistant skirt system
- Semi-recessed body colour awning rail both sides
- External service doors - access under fixed beds (model specific)
- 'Edge' alloy wheels
- High tyre rating - a load margin is included in the tyre specifications
- Steel spare wheel
- 13-pin 'Jaeger' 12V car connector
- AL-KO Euro overrun device with two-way assisted handbrake
- AL-KO carabiner breakaway cable
- Shock absorbers for a smoother towing experience
- Step-on hitch cover for easy cleaning of front windows
- Bulkhead mounted regulator suitable for use with either propane or butane bottles
- LED awning light
- Exterior one-piece door with magnetic stay, interior moulded liner, chrome handle, window with blind, and bin with dust pan and brush
- Aerial point in battery box for portable satellite dish connection
- Exterior access battery box with mains electric inlet (battery not included)
- Entrance step
- Fixing bars for optional Thule rear mounted cycle rack

## INTERIOR

- 1.95m (6'5") headroom
- Panoramic front sunroof with recessed lights and speakers
- 'Saturn' soft furnishing scheme
- Hessian wallboard with contrasting graphite feature panels for a striking interior look

- 'Zebrano' woodgrain locker doors with chrome effect fittings
- Curtains to all windows (except washroom and bunk bed areas – model specific)
- Twin curtain track for improved hanging and ease of use
- Wide stylish front binnacle design incorporating dedicated chrome effect sockets surround (except 850)
- Positive overhead locker catches for secure storage on the move with chrome handles
- Front corner opening lockers for extra storage
- Seat bases featuring spaceframe construction with full front access and space for larger items
- Overhead locker doors with injection moulded spaceframe construction
- Chrome effect socket and switch surrounds
- Two large scatter cushions
- Sectioned removable carpets for flexibility
- 'French Oak' effect, high impact, scratch resistant floor lino
- Decorative 'Ocean Drive' wall covering (850 only)
- Swift AirWave cushioning for greater seating and sleeping comfort
- Seat and backrest ventilation boards
- Beech slat seat and bed bases for extra comfort with sprung hinged tops for easy access
- Bed make-up system with slats retained on track (mid bed uses the table)
- Exclusive Duvalay Duvalite Apollo Luxe mattress containing Freshtec – a market leading high spec foam offering maximum airflow for a cool, comfortable good night's sleep (model specific)
- Fixed beds with aluminium bed frames to maximise strength and storage space (model specific)
- Areas under beds and seats, and washroom areas warmed by Alde perimeter radiators
- Midi-Heki rooflight with flyscreen and adjustable concertina blind in lounge
- Mini-Heki rooflights with flyscreens and adjustable concertina blinds in kitchens and bedrooms (model specific)
- Durable stainless steel kitchen sink
- Decorative kitchen splashback design and worktop colour in white marble effect
- Removable drainer and food grade nylon chopping board nestle together for easy storage in dedicated location

- Foldaway kitchen worktop extension (model specific)
- Two cutlery drawers on smooth-action steel runners (model specific)
- Two pull-out wire baskets in kitchen cupboard
- Chrome finish crockery rack
- Chrome effect swivel spout kitchen and vanity taps for improved use
- Dedicated washroom incorporating shower console and durable shower tray
- Shower bi-fold door retained on track for improved access (865,880)
- One piece 'Vellamo' shower cubicle with curved sliding door (835, 850)
- 32mm thick washroom door with domestic style lock and handle
- Micro-Heki rooflight in washroom (865, 880)
- Mini-Heki rooflight in washroom (835, 850)
- Door flyscreen with easy concertina action
- Pleated blinds and flyscreens to all windows
- Retained embroidered entrance mat
- Freestanding table (suitable for full-size place settings)

## EQUIPMENT

- Exclusive Swift Command control system with large 7" LCD colour touchscreen panel with improved user interface and functionality featuring;
  - Integrated DAB and FM radio tuning and sound setting control
- Simple controls for monitoring and managing:
  - Power
  - Battery selection, battery level meter and power usage
  - 230V AC load limiter (settable between 5 amps & 16 amps)
  - Solar panel charging levels (where fitted)
- Heating control of Alde system
- Environment monitoring with internal & external temperature and internal humidity levels
- Selected lighting control
- Water system controls and tank levels (when fitted)
- Air-conditioning compatible with Dometic and Truma (dealer fit option, model dependent)
- **NEW** fridge control via CI-bus connection
- Swift Command App with interface that is easy to use and more intuitive, enabling you to manage and monitor key vehicle functions from your mobile device including power, heating and selected lighting
- Incorporates a simpler connectivity selection
  - Bluetooth connectivity when with the vehicle
  - Wi-Fi / GSM connectivity when away from the vehicle
- Includes the useful 'Places of Interest' feature including 'Campsites' from the Camping & Caravanning Club and Swift dealership locations
- ALDE radiator central heating and water heating with daily programming with LCD touchscreen control and choice of 1kW, 2kW or 3kW setting
- Digital programmable controller for heating and hot water
- Thetford thermostatic oven with electronic ignition, dual fuel hob with glass lid safety cut-out feature, 1x 800W electric hotplate & 3 gas burners with electronic ignition, and separate grill
- Ventilated microwave oven with digital controls built at an accessible level

- 8-Series Dometic 110 litre, electronic ignition fridge with removable freezer compartment, black effect finish and digital controls (865 & 880)
- NEW tall slimline dual hinged Dometic series 10 133 litre electronic ignition fridge incorporating 12 litre removable freezer compartment (835 & 850)
- Ecocamel Orbit shower head with on/off button for a powerful shower that uses less water
- Thetford C260 toilet with electric flush and 18 litre wheeled waste tank
- High flow rate in-board pump with chrome effect taps for reliable, high performance water supply
- Inboard semi-rigid fresh water pipes
- Large bore underslung rigid waste pipes
- Isolation taps for gas appliances
- Fully protected mains electric system
- 25 amp switchmode charger/transformer
- TV station with 230V, 12V and aerial sockets (two in selected models)
- TV bracket including a travel lock where applicable
- Status 570 directional Digital / Analogue TV/ FM aerial and booster
- 80W roof mounted solar panel
- Over locker LED lighting and LED strip lighting above wardrobes
- LED downlights set in plinth over kitchen locker
- Illuminated pelmets above side windows
- Adjustable under locker LED spotlights
- Illuminated washroom mirror (835, 850)
- A minimum of four 230V sockets throughout with twin USB points for easy charging of portable devices
- 25 metre mains hook-up cable

## SAFETY AND SECURITY

- Swift Command Tracker, a Thatcham Category S7 approved pro-active tracker pre-installed as part of Swift Command system (subject to annual subscription)
- Convenient one-key high security locks
- AKS 3004 stabiliser
- Receiver for optional AL-KO Secure wheel lock

- Smoke alarm
- Carbon monoxide detector
- CRiS identity number labels on windows and caravan chassis
- VIN CHIPTM identification system concealed within construction to deter theft and aid quick recovery
- Dead lock facility on entrance door for added security

## CUSTOMER SERVICE

- Exclusive Connect Direct online account with direct access to Swift

## FACTORY FIT OPTIONS

- Optional Lux Pack includes illuminated kitchen splashback, key fob operated alarm & awning light, BBQ point, 230V external mains point and external access service door to nearside front bed
- Alternative fabric schemes including the SwiftShield stain-resistant, easy-clean fabric with soft suede like texture
- AL-KO ATC trailer control system

## DEALER FIT OPTIONS

- AL-KO Secure wheel lock
- Wrap-around front seating in addition to drawer chest (except 850)
- Weight plate upgrade (model dependent)
- Roof mounted air conditioning unit (model dependent)
- Oyster satellite system (model dependent)
- Thule rail mounted rear cycle rack – G2 Elite

# FABRIC OPTIONS

Within the Challenger range there are two fabric options available; the 'Glacier' scheme that comes as standard and the optional SwiftShield scheme. Please ask your dealer for full details.

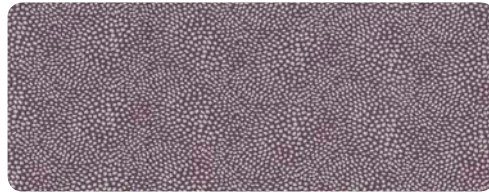
## GLACIER

Upholstery scheme - standard fabric

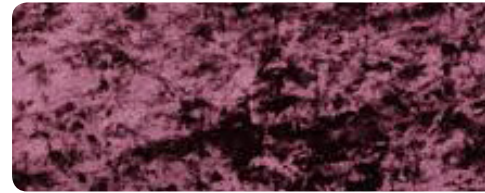
### SEATING



### CUSHION



### CUSHION



### CURTAINS

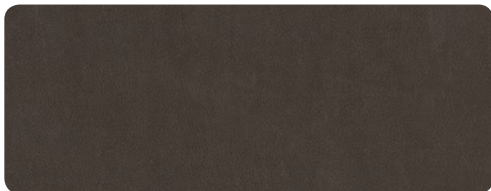


---

## SWIFTSHEILD

Upholstery scheme - optional fabric

### SEATING



SwiftShield fabric has a soft suede type feel and has been treated during manufacturing to resist stains. It is very easy to clean and just requires a soft cloth dampened with water to remove most stains. SwiftShield is exclusive to Swift Group, you can find out more on Swift TV.

[www.swifttv.co.uk](http://www.swifttv.co.uk)

# OUR VALUE ADDED PARTNERS



Constantly innovating for the best nights' sleep possible, Duvalay™'s bespoke mattresses and bedding are trusted by our customers. We fit Duvalay™'s Duvalite™ mattress as standard on all fixed beds across our caravans and motorhomes, while our holiday homes and lodges feature the exclusive Duvalay™ Holiday Home Collection mattress.



Proudly made in Sweden since 1949, Alde delivers the quietest, most comfortable heating systems for the world's explorers. We have worked with Alde since 1994 to help make our leisure vehicles feel more like home, testing our caravans and motorhomes down to minus 15°C to ensure you stay cosy no matter where the road takes you.



Swift partners with Oyster satellite TV and broadband to keep you entertained on the go. The permanently mounted dishes fold away when travelling, then locate the satellite signal automatically for efficient operation. Made in Germany with a dedicated UK service centre, the satellites come with a 3-year warranty.



Swift Group is proud to support a local charity the Daisy Appeal.

The Daisy Appeal gives loved ones faster, more accurate, diagnosis of three of the region's biggest killers – cancer, heart disease, and dementia.

The charity's aim is to provide a world-class PET-CT scanning facility which will provide a comprehensive clinical service, alongside an ambitious clinical research programme exploring new applications of imaging techniques.

Currently in the UK, most PET-CT scanning is carried out on cancer patients. However, it has great potential in various heart, neurological and other diseases. Many of these will necessitate the use of short half-life radioactive 'markers' which will need to be manufactured on site. Hence the requirement of a purpose built cyclotron, radiochemistry and radiopharmacy facility.

For every caravan, motorhome and holiday home sold, Swift Group make a donation to the Daisy Appeal, helping them to reach their goal of becoming the UK's number one PET-CT service.

**To find out more visit [www.daisyappeal.org](http://www.daisyappeal.org)**



One of the industry's leading heating systems, Truma's combi heaters are perfect for caravans and motorhomes with their lightweight, compact structure and quiet operation, as well as efficient boost function. We fit Truma products so our customers can enjoy cold chamber-tested, Grade 3 standard heating and insulation.



The world's leading battery manufacturer, Yuasa is a long-time supplier of leisure vehicle batteries to Swift thanks to its products' high quality, long life and superior performance, powering the demands of modern lifestyles.



**Diamondbrite**  
LEISURE

Swift partners with Diamondbrite Leisure - leaders in paint and upholstery protection - to help maintain your caravan or motorhome. Professionally applied at your dealership with a lifetime guarantee, it includes an exterior nano-ceramic high-gloss coating for easier cleaning and an upholstery elixir which resists staining.

CREATING SMILES FOR LIFE



VISIT SWIFTGROUP.CO.UK TO...



Configure your model



Watch videos



Download brochures and handbooks



Find a dealer



Social



UK  
Private  
Business  
Awards  
2018

Winner  
The  
**Swift Group**  
Private Business  
of the Year Award

This brochure does not constitute an offer by Swift Group Limited (Swift). Swift reserves the right to alter specifications and prices at any time as materials and conditions demand. Distributors and dealers sell Swift products on their own account and not as agents of Swift. Accordingly, they have no authority to bind Swift or to make any representation or undertaking whatsoever on behalf of Swift. All props are for photographic purposes only and are not included in the specification. Models shown may be fitted with optional extras. Issued September 2019.

Find out more at [swiftgroup.co.uk](http://swiftgroup.co.uk)