

CREATING SMILES FOR LIFE



SWIFT



2020 EDGE

INSPIRING GENERATIONS



New for 2020, Swift Edge is a contemporary motorhome designed for life's adventurers, whether couples or families. With an MTPLM of 3,500kg or less, and well equipped with all the essentials, it's an excellent first motorhome that can be driven on a normal Category B license. The range includes high and low-line models and is styled for action.

With security a paramount consideration for many, it is reassuring that Edge is pre-installed with Swift Command Tracker, a Thatcham Category S7 approved pro-active tracker with subscription option for extra security and insurance discounts*. And for even further peace of mind, A VIN CHIP™ identification system is concealed in the construction to deter theft and aid quick recovery.

Images shown with optional features.

*Dependent on insurer

2020 EDGE

At Swift we want your leisure vehicle to be your sanctuary, where you can relax, unwind and let the 9-5 melt away. That's why everything we produce is designed for the utmost luxury, practicality and performance, using our innovative approach to help you create smiles for life. Step inside and take the tour...

CONTENTS

04 REASONS TO BUY

06 SWIFT EDGE

14 RANGE QUICK VIEW

15 HIGHLIGHTS

16 SPECIFICATION

18 FEATURES

20 FABRIC OPTIONS

21 VALUE ADDED PARTNERS



REASONS TO BUY A SWIFT MOTORHOME

Find out what sets Swift apart

4



Images shown with optional features.

RELIABLE BUILD QUALITY

SMART, the UK's leading modern construction system*: extensively researched and tested. Improving moisture resilience, aerodynamics, strength and aesthetics, with a 10-year manufacturer bodyshell warranty**.



*Coachbuilt models only | **Subject to Ts&Cs.



PROTECTING GOOD LOOKS

More durable and better at withstanding impact, a GRP outer shell and hail resistant roof protects Swift motorhomes* to maintain their fantastic looks. Inside, extreme pound-tested cushioning, bleachable carpets and robust fabrics, including optional SwiftShield, keep your home from home looking its best.

*Coachbuilt models only



PIONEERS

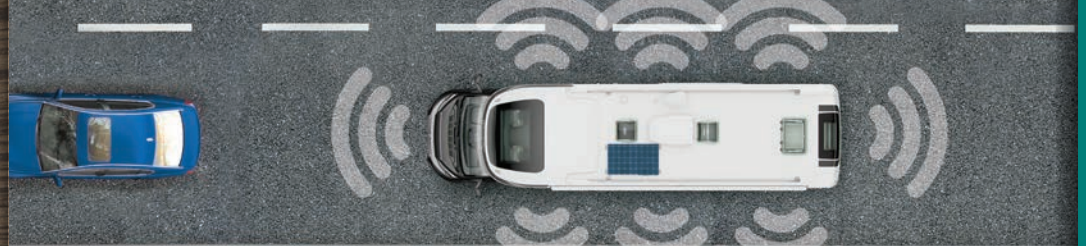
Innovation is our passion. We continually push the boundaries and utilise state of the art design and construction techniques to ensure our products look sensational, work intuitively and function efficiently, like Swift Command for monitoring and controlling onboard systems via a user-friendly panel and smartphone app. It's vehicle management at your fingertips.



SECURE & SAVE

For greater security, Swift Command Tracker, the pre-installed Thatcham Category S7 approved pro-active tracker* with 24/7 EU cover. There's also Supersure Insurance, Defaqto 5-star rated with half-price insurance for owners of a Swift motorhome up to 3 years old.** All Swift motorhomes come with many energy efficient features like LED lighting.

*Discounts dependent on insurance provider **Subject to annual subscription ***For first year only



EXTENSIVE CHOICE

With over forty models across six motorhome ranges, there is a huge choice to suit most budgets and tastes - all supported by the UK's largest dealer network. Many ranges have a selection of value-added extras to help you customise your motorhome.

Whatever specification you decide, Swift owners enjoy exceptional value for money.



EUROPE'S NO.1 BRAND

Yorkshire bred with a deep-rooted customer-first philosophy for your best Swift experience. Skilled technicians are 'Swift Academy' trained to craft and care for your motorhome, with expert advice close at hand via Connect Direct, an online account for new owners offering support and guidance; report a problem, and we'll work with your dealer to resolve it.

Moreover, we partner with leading suppliers such as Duvalay™ to deliver class-leading specification.



SWIFT EDGE

With a white Fiat chassis cab enhanced by a body coloured bumper and distinctive orange mountain graphics scheme, Edge's stylish, aerodynamic profile incorporates an overcab bed in high-line models. It is powered by a Euro 6, 2.3l engine* with manual gearbox, and can be driven on a standard Category B license.

CONTROL AT YOUR FINGERTIPS

For added confidence, Edge offers control features including ESC, ABS brakes, EBD (electronic brake force distribution) and immobiliser with rolling code. And to control many of your onboard systems, the exclusive Swift Command system, featuring an LCD panel, is fitted as standard with app interface.

ENJOY THE RIDE

Inside the cab, there are a host of convenient features including a USB point (other USB points are included in living area) and integrated factory fit radio/MP3 player with Bluetooth and optional DAB for more pleasant driving. The adjustable captain's chairs have fully upholstered covers and swivel function, so they can double up as lounge seating*.

*No swivel function on 476/486



Images shown with optional features.





Images shown with optional features.



FEEL COMPLETELY AT HOME

Inside, fresh 'Vitatta' soft furnishings, robust fittings and hardwearing materials reinforce Edge's family credentials, while ultra-low energy LED lighting creates a bright, welcoming ambience. Comfort is assured with durable Swift AirWave foam in seats and backrests, and at night you can snuggle up on a lightweight memory fibre Duvalay™ mattress for a supremely restful night's sleep.

EVERYTHING AT HAND IN THE KITCHEN

For preparing and sharing meals together, the fully-equipped kitchen offers plenty of storage and work surfaces, with a foldaway extension for extra space as well as a Dometic 8 series fridge and combination thermostatic oven, featuring a 3-burner gas hob and grill.

FRESH FOR THE ADVENTURES AHEAD

For freshening up after the day's activities, the efficient washroom is fitted with a shower, electric flush Thetford cassette toilet and mirrored vanity cupboard with washbasin, while a multi-directional rooflight with flyscreen brightens the room with natural light.



Images shown with optional features.



Drivers Pack: DAB Radio



Drivers Pack: Cruise control



Living Pack: Microwave



Drivers Pack: Reversing sensors



Living Pack: Fitted curtains



Living Pack: Status 570 TV aerial

FRESH FOR THE ADVENTURES AHEAD

For freshening up after the day's activities, the efficient washroom is fitted with a shower, electric flush Thetford cassette toilet and mirrored vanity cupboard with washbasin, while a multi-directional rooflight with flyscreen brightens the room with natural light.

A RETREAT FOR ALL SEASONS

Keeping everyone cosy is Truma's dual fuel blown air heating system, ensuring the motorhome achieves Grade 3 classification for heating and thermal insulation. For added convenience, a 100l internal fresh water tank*, 60l waste water tank with level sensor, and an 80 amp-hour leisure battery are included.

CUSTOMISED TO YOUR NEEDS

Choose from Edge's optional special value packs, the Driver's Pack and Living Pack. The Drivers Pack has cruise control, passenger airbag, DAB radio and reversing sensors, while the Living Pack presents a host of desirable additions such as a built-in microwave, sectioned removable carpet and Winter Pack, with waste water tank heater featuring en route heating and under floor waste pipe insulation.

*90 litre on 412 model

**HALF
PRICE
INSURANCE***



***SUPERSURE*
INSURANCE**

12

INSURE YOUR SMILES

Defacto 5-star rated insurance available on all Swift Motorhomes up to 3 years old

[swiftgroup.co.uk/buy/supersure-insurance](https://www.swiftgroup.co.uk/buy/supersure-insurance)



*Half-price insurance rate is applied when buying a new or up to 3 years old Swift caravan, and after all available discounts have been taken into account. Ts & Cs apply.

**LOW
RATE
FINANCE**



**SWIFT
ADVANCE**

A TRADING STYLE OF

blackhorse



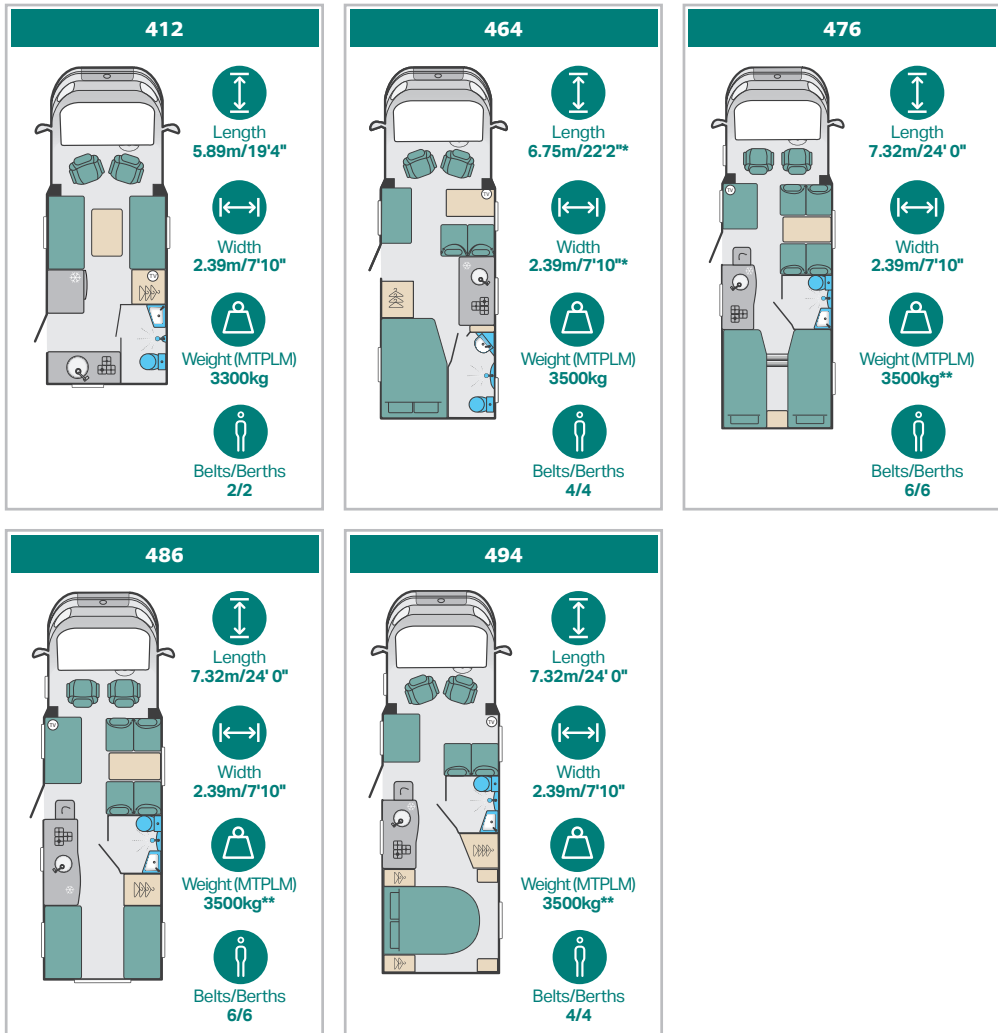
FINANCE YOUR SMILES

Funding options to help finance your next Swift Motorhome?

[swiftgroup.co.uk/buy/finance](https://www.swiftgroup.co.uk/buy/finance)

Credit is subject to status and is only available to UK residents aged 18 or over.
Credit is provided by Swift Advance a trading style of Black Horse Ltd, St William House,
Tresillian Terrace, Cardiff CF10 5BH

EDGE RANGE QUICK VIEW



For days full of possibilities, exciting activities and simple pleasures, all amid the landscapes of your choosing, discover Swift's unforgettable motorhome range.

Escape the 9-5 and find your own path with the amazing freedom offered by a luxurious motorhome. Instead of the hassle and restriction of booking hotels, let your holidays be guided by your own sense of adventure – those last-minute whims, those must-see recommendations, those can't-bear-to-leave moments. Prepare and share meals together, watch the sun set and switch off from the world, before a great night's sleep where you can dream of all the next day holds. It's your very own home-from-home, where you can enjoy everyday comforts, privacy and amenities wherever the road takes you.

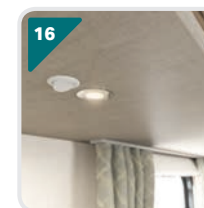
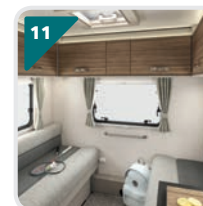
From family holidays full of fun, sand castles and exploration, to relaxing getaways for just the two of you, what better way to make lifelong memories and create smiles for life than with a Swift motorhome.



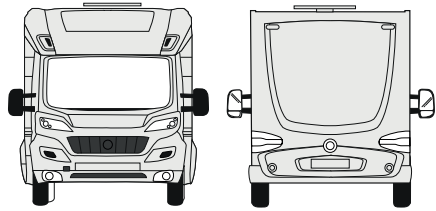
** MTPLM and / or engine BHP may be different if a vehicle with a Euro 6B engine is purchased. Please ask your Swift approved dealer for details.

EDGE HIGHLIGHTS





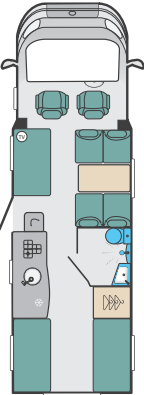
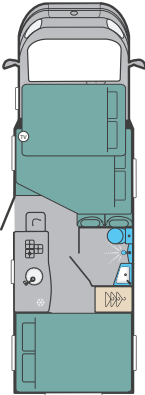
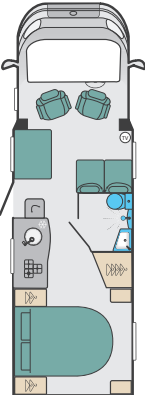
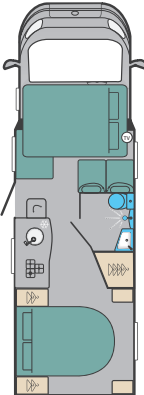
- 01.** White Fiat chassis cab with Fiat Euro 6, 2.3 litre engine, complementary graphics and daytime running lights – all models at 3500kg or less
- 02.** Standout orange funky mountain exterior graphic scheme to appeal to life's adventurers
- 03.** Five models featuring distinctive streamlined aerodynamic profiles; three GRP front highline pod with side window (476, 486 & 494) and two with GRP lowline pod (412 & 464)
- 04.** Dashboard design with fully integrated factory fit DAB Radio/MP3 player with Bluetooth and switch-off timing adjustable up to 3 hours and wing mirror antenna for better reception (part of Drivers Pack)
- 05.** Smart construction with full GRP rear panel and replaceable lower ABS corner caps
- 06.** High performance, durable Swift AirWave foam in seats and backrests for greater seating and sleeping comfort
- 07.** Exclusive Duvalay Duvalite™ Gravity Luxe mattress containing Freshtec – a market leading high spec foam offering maximum airflow for a cool, comfortable good night's sleep (fixed beds and drop down beds)
- 08.** Dometic 8 series 85 litre fridge with 230V, gas and 12V operation and combination thermostatic oven, grill and 3 burner gas hob, all with electronic ignition
- 09.** Domestic style kitchen with worktops in 'Fero' dark grey, stainless steel sink, worktop extension and chrome effect mixer tap
- 10.** Dual fuel heating with Truma Combi boiler
- 11.** Modern 'Vittata' soft furnishing scheme with scatter cushions and 'Zebrano' woodgrain with contemporary colouring
- 12.** Optional special value Drivers and Living Pack incorporating cruise control, reversing sensors, built-in digital microwave and Winter Pack
- 13.** Exclusive Swift Command control system with LCD panel with controls for monitoring and managing onboard function, with app interface now including fridge control
- 14.** 'Zebrano Oak' overhead lockers with chrome handles and chrome push-button locks
- 15.** A minimum of four 230V sockets, 12V socket on rear passenger seats (model specific) and dedicated USB points
- 16.** Ultra-low energy lighting system with LED spotlights and over-locker ambient lighting



EDGE SPECIFICATION



	412			464			476		
	Standard	Optional	Optional	Standard	Optional	Optional	Standard	Optional	Optional
Fiat MultiJet Diesel Engine	120	140	140 Auto	120	140	140 Auto	120	140	140 Auto
Engine Capacity	2.3 ltr			2.3 ltr			2.3 ltr		
Engine Power	120 HP @ 2750rpm	140 HP @ 3500rpm	140 HP @ 3500rpm	120 HP @ 2750rpm	140 HP @ 3500rpm	140 HP @ 3500rpm	120 HP @ 2750rpm	140 HP @ 3500rpm	140 HP @ 3500rpm
Engine Torque	320 Nm @ 1400rpm	350 Nm @ 1400rpm	350 Nm @ 1400rpm	320 Nm @ 1400rpm	350 Nm @ 1400rpm	350 Nm @ 1400rpm	320 Nm @ 1400rpm	350 Nm @ 1400rpm	350 Nm @ 1400rpm
Roof Profile	Low-Line			Low-Line			High-Line		
Wheel Base	3.00m / 9'10"			3.80m / 12'6"			4.04m / 13'3"		
Seat Belts (inc. driver)	2			4			6		
Berths (Sleeping Positions)	2			4			6		
Overall Length	5.89m / 19'4"			6.75m / 22'2" Est			7.32m / 24'0"		
Overall Width (Mirrors Folded)	2.39m / 7'10"			2.39m / 7'10" Est			2.39m / 7'10"		
Overall Height (Excludes Roof rack)	2.89m / 9'6"			2.91m / 9'6" Est			2.98m / 9'9"		
Optional Awning	Thule 4900 2.6m			Thule 4900 3.5m			Thule 4900 3.5m		
Maximum Technical Permissible Laden Mass (A)	3300kg			3500kg	3500kg	3500kg	3500kg	3500kg	3650kg
Mass in Running Order (B)	2767kg Est	2767kg Est	2800kg Est	2904kg Est	2904kg Est	2937kg Est	2991kg	2991kg	3024kg
Maximum User Payload (A-B)	533kg Est	533kg Est	500kg Est	596kg Est	596kg Est	563kg Est	509kg	509kg	626kg
Essential Habitation Equipment	0kg			0kg			0kg		
Thermal Insulation Grade	THREE			THREE			THREE		
Recommended Maximum Trailer Weight	2000kg*			2000kg			N/A	N/A	2000kg
Gross Train Weight	5300kg			5500kg			3500kg	3500kg	5650kg
BED SIZES									
Front Double	214cm x 130cm / 7'0" x 4'3"			215cm x 123cm / 92cm / 7'11" x 4'0" / 3'0"			215cm x 180cm / 86cm / 7'1" x 5'11" / 2'10"		
Front Nearside Single (inc Cab Seat)	188cm x 72cm / 6'2" x 2'4"								
Front Offside Single (inc Cab Seat)	188cm x 72cm / 6'2" x 2'4"								
Rear Double				188cm x 133cm / 6'2" x 4'4"			214cm x 143cm / 7'0" x 4'8"		
Rear Nearside Single							191cm x 83cm / 6'3" x 2'5"		
Rear Offside Single							191cm x 83cm / 6'3" x 2'5"		
Rear Bunk (Upper)									
Rear Bunk (Lower)									
Overcab Bed							190cm x 134cm / 6'3" x 4'5"		

486			494		
					
					
					
Standard	Optional	Optional	Standard	Optional	Optional
120	140	140 Auto	120	140	140 Auto
2.3 ltr			2.3 ltr		
120 HP @ 2750rpm	140 HP @ 3500rpm	140 HP @ 3500rpm	120 HP @ 2750rpm	140 HP @ 3500rpm	140 HP @ 3500rpm
320 Nm @ 1400rpm	350 Nm @ 1400rpm	350 Nm @ 1400rpm	320 Nm @ 1400rpm	350 Nm @ 1400rpm	350 Nm @ 1400rpm
High-Line			High-Line		
4.04m / 13'3"			4.04m / 13'3"		
6			4		
6			4		
7.32m / 24'0"			7.32m / 24'0"		
2.39m / 7'10"			2.39m / 7'10"		
2.98m / 9'9"			2.98m / 9'9"		
Thule 4900 3.5m			Thule 4900 3.5m		
3500kg	3500kg	3650kg	3500kg	3500kg	3500kg
2991kg	2991kg	3024kg	2975kg	2975kg	3008kg
509kg	509kg	626kg	525kg	525kg	492kg
0kg			0kg		
THREE			THREE		
N/A	N/A	2000kg	2000kg		
3500kg	3500kg	5650kg	5500kg		
215cm x 180cm / 71" x 5'11" / 4'0"			215cm x 180cm / 71" x 5'11" / 4'0"		
214cm x 131cm / 7'0" x 4'4"			185cm x 133cm / 6'1" x 4'4"		
190cm x 134cm / 6'3" x 4'5"			190cm x 134cm / 6'3" x 4'5"		

Notes:

- * With this vehicle configuration it will be necessary to reduce the payload carried inside the van when towing to ensure that the MTPLM and maximum axle loads are not exceeded.
- Est. Estimate
- ‡ Requires chassis upgrade to 3650kg on 476 & 486
- # Please note that the additional weight of the tow bar and trailer nose weight increases the rear axle loading of the motorhome so care should be taken that the rear axle load is not exceeded when towing. To ensure adequate road holding, the load on the front axle, under all conditions, must not be less than 40% or more than 70% of the total weight. Care must be taken when distributing loads. Please see the Technical Handbook for permissible axle loads, the loadings and weights stated are maximums and must not be exceeded under any circumstances.

For General Technical Notes see back cover

FEATURES

CHASSIS-CAB

- White Fiat chassis cab with body coloured bumper
- Daytime running lights
- Euro 6D 120bhp, 2.3 litre engine with manual gearbox and ESC
 - ESC includes: anti-slip regulation (ASR), roll over mitigation (ROM) and hill holder
 - 60L fuel tank and 19L AD-blue based after treatment system
- Dashboard design with fully integrated factory fit radio/MP3 player with Bluetooth and switch-off timing adjustable up to 3 hours and wing mirror antenna for better reception
- Cab air-conditioning
- Driver's airbag
- Thermal cab window covers
- Captain's chairs with twin armrests and integrated headrest
- Driver and passenger seats with:
 - Position, height and rake adjustment
 - Swivels (except 476/486)
 - Two armrests
 - Fully upholstered covers
 - Seat base surrounds
- ABS brakes
- EBD (electronic brake force distribution)
- Immobiliser with rolling code
- Variable power steering
- Key fob operated remote central locking of cab doors
- Electrically operated and tinted cab windows
- Headlamp height adjustment
- Adjustable steering wheel position
- Central cup holder with dash mounted holder for full width tablet and pocket for smartphone with USB port for charging
- Door pockets with bottle holders
- 12V power socket

BODY AND EXTERIOR EQUIPMENT

- European Whole Vehicle Type Approval ensures compliance with strict weight, dimensions and safety regulations
- VIN CHIP™ identification system concealed within construction to deter theft and aid quick recovery
- All models have a MTPLM of 3500kg or less and can be

driven on a normal category B driving license with the exception of the 412 model which has an MTPLM of 3300kg

- SMART construction with full GRP body shell:
 - Strong, moisture proof 'PURE' Polyurethane timber less framed body shell with HD polystyrene insulation core
 - Balanced panel 31mm sandwich side walls with GRP outer and inner skin
 - 44mm 'Sandwich' floor construction with GRP outer skin, ply upper and high rigidity Styrofoam core
 - 31mm 'sandwich' construction hail resistant exterior GRP roof, fully bonded for extra strength and flatness, and GRP inner skin
- Full height GRP rear panel with replaceable lower corner caps
- Distinctive streamlined aerodynamic exterior profiles
 - GRP front high line pod with side window (476/486/494)
 - GRP low line pod (464/412)
- Modern graphics scheme coordinated with cab
- White moulded skirts link with full GRP rear panel
- Large exterior 'garage' access door (476)
- Main habitation door with 2 point locking system and integrated door retainer
- Single key for all habitation doors
- Flush fitting, double glazed, tinted acrylic windows with night latch ventilation
- 15" wheels with full wheel trims
- Exclusive styled front LED marker lights
- LED side marker lights
- Exclusive LED rear light clusters
- Low energy LED exterior awning light
- LED high-level brake light
- Provision for 1 x 6kg and 1 x 13kg gas bottles with fitted butane/propane regulator
- Fix & Go puncture repair kit
- Bike rack fixing rails fitted to the rear

LIVING AREA

- 'Vittata' soft furnishing scheme
- 'Zebrano' woodgrain with contemporary colouring
- Chrome handles with push-button locks on overhead locker doors

- Two-position front seating arrangement with two forward facing travelling seats (464/494)
- Four-position front dinette seating with two forward facing and two rearward facing travelling seats (476/486)
- Ergonomically shaped rear travelling seats
- Lap and diagonal seat belts on all designated passenger seats
- High performance, durable Swift AirWave foam in seats and backrests for greater seating and sleeping comfort
- Wall mounted dining tables (464/476/486/494)
- Freestanding dining table (412)
- Exclusive Duvalay Duvalite™ Gravity Luxe mattress (Fixed beds and Luton beds)
- Luton over cab fixed beds (476/486/494)
- Seat backrest ventilation boards
- Lounge seat and bed tops gas spring assisted for easy access (except travelling seats)
- Bed mattresses and lounge bench seat cushions supported by beech slats for extra comfort
- Pleated 3-sided blinds with flyscreens on all windows
- Metal curtain tracks for washrooms curtains
- MPK roof light in lounge area with flyscreen and adjustable pleated blind
- French Oak effect, high impact, scratch resistant floor lino
- Smoke alarm
- Carbon monoxide alarm

KITCHEN

- Dometic 8 series 85 litre manual energy selection fridge with 230V, gas and 12V operation
- Combination thermostatic oven, 3 burner gas hob with glass lid featuring auto gas shut-off functionality, and grill all with electronic ignition
- MPK Kitchen roof light with flyscreen and blind
- Foldaway kitchen worktop extension (except 412 & 464)
- Drawer storage under oven (model specific)
- Vector chrome effect kitchen mixer tap
- LED strip lighting in china locker
- Kitchen worktop in 'Fero' dark grey with textured finish and durable stainless steel sink

WASHROOM

- Washroom design with vanity unit, sink and shower
- 32mm thick entrance door with domestic style mortice lock and handle
- Chrome effect mixer tap for vanity and shower
- Thetford cassette toilet with electric flush and 18 litre wheeled tank
- Overhead towel shelf
- Micro- Heki skylight with flyscreen (except 464 which has side window)
- LED lighting
- High gloss white washroom wallboard

HEATING AND PLUMBING

- Grade 3 classification (EN 1646-1) for heating and thermal insulation (for sub-zero ambient temperatures)
- Dual fuel heating with Truma Combi 4 1.8kW electric/4kW gas/3.8kW combined (412 & 464)
- Combi 6 1.8kW electric / 6kW gas / 5.8kg combined (486, 494 & 476)
- Digital programmable controller for heating and hot water
- Truma regulator
- 100 litre internal fresh water tank with level sensor (90 litre external fresh water tank on 412)
- 60 litre waste water tank with level sensor
- Manual drain valves on waste water tanks
- Pressurised fresh water system with self-priming pump and accumulator

ELECTRICAL

- Exclusive Swift Command control system with LCD panel with controls for monitoring and managing:
 - Power
 - Battery selection, battery level meter and power usage
 - 230V AC load limiter (settable between 5 amps & 16 amps)
 - Solar panel charging levels (where fitted)
 - Heating control of Truma system
 - Environment monitoring with internal and external temperature and internal humidity levels
 - Selected lighting control

Discover your ideal motorhome with Swift Go

Reclaim up to 7 nights hire when you buy*



- Hire from 3 nights
- Brand new motorhomes
- Direct from the UK's leading manufacturer for leisure vehicles
- 3 simple clicks to book
- One price - no hidden extras
- All vehicles come with Wi-Fi

* Terms & conditions apply. See swiftgo.co.uk for details.

- o Water system controls and tank levels
- o Air-conditioning compatible with Dometic and Truma (dealer fit option, model dependent)
- Pre-installed Swift Command Tracker, a Thatcham Category S7 approved pro-active tracker (subject to annual subscription)
- Swift Command app enabling you to manage and monitor key vehicle functions from your mobile device including power, heating and selected lighting:
 - Incorporates a simpler connectivity selection
 - Bluetooth connectivity when with the vehicle
 - Wi-Fi / GSM connectivity when away from the vehicle
 - Includes the useful 'Places of Interest' feature including campsites from the Camping & Caravanning Club and Swift dealership locations
- Fully sealed, long life, 80 Amp-hour (Dir 2006/66/EC) leisure battery below driver's seat
- 12V socket for rear passenger seats
- A minimum of four chrome 230V sockets and dedicated USB points
- Mains consumer unit with mains isolators and 12V fuse board
- 25 Amp/300W charger/transformer for leisure batteries
- TV station with 230V and 12V sockets, aerial socket
- Ultra-low energy lighting system:
 - o LED downlights on undersides of lockers
 - o Over-locker LED ambient lighting
- 25 metre mains hook-up cable

CUSTOMER SERVICE

- Exclusive Connect Direct online account with direct access to Swift

FACTORY FIT OPTIONS

- Upgrade to Euro 6D 140bhp, 2.3 litre engine with manual gearbox – includes Eco Pack; stop and start system, smart alternator and more efficient energy saving fuel pump
- Upgrade to Euro 6D 140bhp, 2.3 litre engine with 9-speed full automatic transmission* - includes Eco Pack; stop and start system, smart alternator and more efficient energy saving fuel pump (includes upgrade to 16" alloy wheels)

*When AUTOMATIC option is selected to 476, 486, 494 must take MTPLM upgrade to 3650KG

- 15" alloy wheels
- Special Value Drivers Pack consisting of:
 - o Cruise control
 - o Passenger air bag
 - o DAB radio
 - o Reversing sensors
- Special value Living Pack consisting of:
 - o Sectioned removable carpets for flexibility
 - o Fitted curtains
 - o Built-in microwave oven with digital controls
 - o Status 570 TV aerial
 - o Stepwell matt
 - o TV bracket with travel lock
 - o Exterior door flyscreen and integrated bin
 - o Winter Pack with:
 - Waste water tank heater with en-route heating to keep defrosted
 - Under floor waste pipe insulation
- Detachable homologated tow bar and electrics* (conforming to 94/20/EC or 55R ECE)
 - *When fitted to 476, 486, 494 must take MTPLM Upgrade to 3650KG
- 3650KG MTPLM upgrade (464, 476, 486 & 494)

DEALER FIT OPTIONS

- Annual subscription to Swift Command Tracker by Sargent
- Roof mounted air conditioning unit (model dependent)
- Thule rail mounted rear cycle rack
- Oyster satellite system (model dependent)
- Thule roll out awning

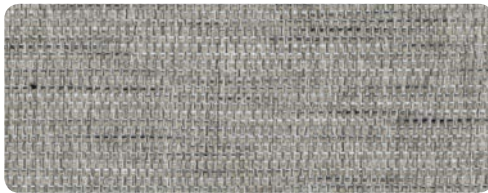
FABRIC OPTIONS

Within the Edge range there are two fabric options available, the 'Vittata' scheme that comes as standard and the optional 'SwiftShield' scheme. Please ask your dealer for full details.

VITTATA

Upholstery scheme - standard fabric

SEATING



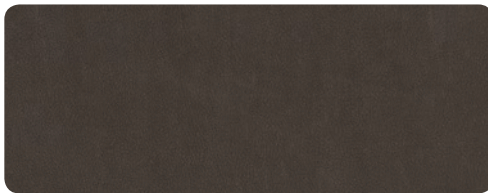
CURTAIN



SWIFTSHEILD

Upholstery scheme - optional fabric

SEATING



CURTAIN



SwiftShield fabric has a soft suede type feel and has been treated during manufacturing to resist stains. It is very easy to clean and just requires a soft cloth dampened with water to remove most stains. SwiftShield is exclusive to Swift Group, you can find out more on Swift TV.

www.swifttv.co.uk

OUR VALUE ADDED PARTNERS



Constantly innovating for the best nights' sleep possible, Duvalay™'s bespoke mattresses and bedding are trusted by our customers. We fit Duvalay™'s Duvalite™ mattress as standard on all fixed beds across our caravans and motorhomes, while our holiday homes and lodges feature the exclusive Duvalay™ Holiday Home Collection mattress.



Proudly made in Sweden since 1949, Alde delivers the quietest, most comfortable heating systems for the world's explorers. We have worked with Alde since 1994 to help make our leisure vehicles feel more like home, testing our caravans and motorhomes down to minus 15°C to ensure you stay cosy no matter where the road takes you.



Swift partners with Oyster satellite TV and broadband to keep you entertained on the go. The permanently mounted dishes fold away when travelling, then locate the satellite signal automatically for efficient operation. Made in Germany with a dedicated UK service centre, the satellites come with a 3-year warranty.



Swift Group is proud to support a local charity the Daisy Appeal.

The Daisy Appeal gives loved ones faster, more accurate, diagnosis of three of the region's biggest killers – cancer, heart disease, and dementia.

The charity's aim is to provide a world-class PET-CT scanning facility which will provide a comprehensive clinical service, alongside an ambitious clinical research programme exploring new applications of imaging techniques.

Currently in the UK, most PET-CT scanning is carried out on cancer patients. However, it has great potential in various heart, neurological and other diseases. Many of these will necessitate the use of short half-life radioactive 'markers' which will need to be manufactured on site. Hence the requirement of a purpose built cyclotron, radiochemistry and radiopharmacy facility.

For every caravan, motorhome and holiday home sold, Swift Group make a donation to the Daisy Appeal, helping them to reach their goal of becoming the UK's number one PET-CT service.

To find out more visit www.daisyappeal.org



One of the industry's leading heating systems, Truma's combi heaters are perfect for caravans and motorhomes with their lightweight, compact structure and quiet operation, as well as efficient boost function. We fit Truma products so our customers can enjoy cold chamber-tested, Grade 3 standard heating and insulation.



The world's leading battery manufacturer, Yuasa is a long-time supplier of leisure vehicle batteries to Swift thanks to its products' high quality, long life and superior performance, powering the demands of modern lifestyles.



Diamondbrite
LEISURE

Swift partners with Diamondbrite Leisure - leaders in paint and upholstery protection - to help maintain your caravan or motorhome. Professionally applied at your dealership with a lifetime guarantee, it includes an exterior nano-ceramic high-gloss coating for easier cleaning and an upholstery elixir which resists staining.

CREATING SMILES FOR LIFE



VISIT SWIFTGROUP.CO.UK TO...



Configure your model



Watch videos



Download brochures and handbooks



Find a dealer



Social



UK
Private
Business
Awards
2018

Winner
The
Swift Group
Private Business
of the Year Award

This brochure does not constitute an offer by Swift Group Limited (Swift). Swift reserves the right to alter specifications and prices at any time as materials and conditions demand. Distributors and dealers sell Swift products on their own account and not as agents of Swift. Accordingly, they have no authority to bind Swift or to make any representation or undertaking whatsoever on behalf of Swift. All props are for photographic purposes only and are not included in the specification. Models shown may be fitted with optional extras. Issued September 2019.

Find out more at swiftgroup.co.uk